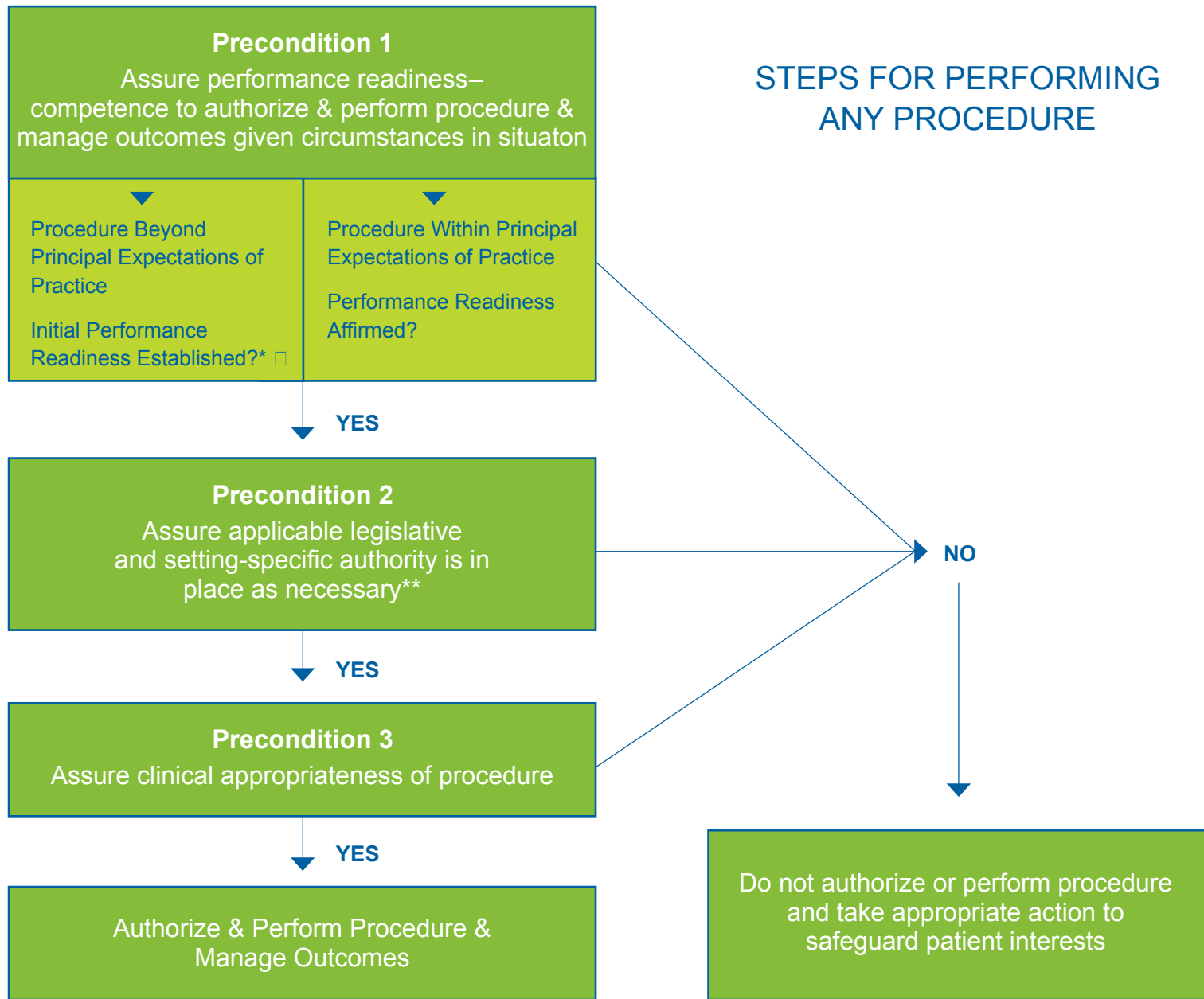


## STEPS FOR PERFORMING ANY PROCEDURE



\* Templates available to assist with establishing performance readiness—see [Performance Readiness Assessment](#) and [Performance Readiness Plan](#) forms and instructions

\*\* Legislative authority includes orders, directives and delegation. Setting-specific authority includes assignments, role description, privileges and the like. Templates available to assist with establishing directives and delegation - see [Medical Directive and/or Delegation](#), [Delegation](#) and [Supporting Document](#) forms and instructions.